

# Kitchen Collection

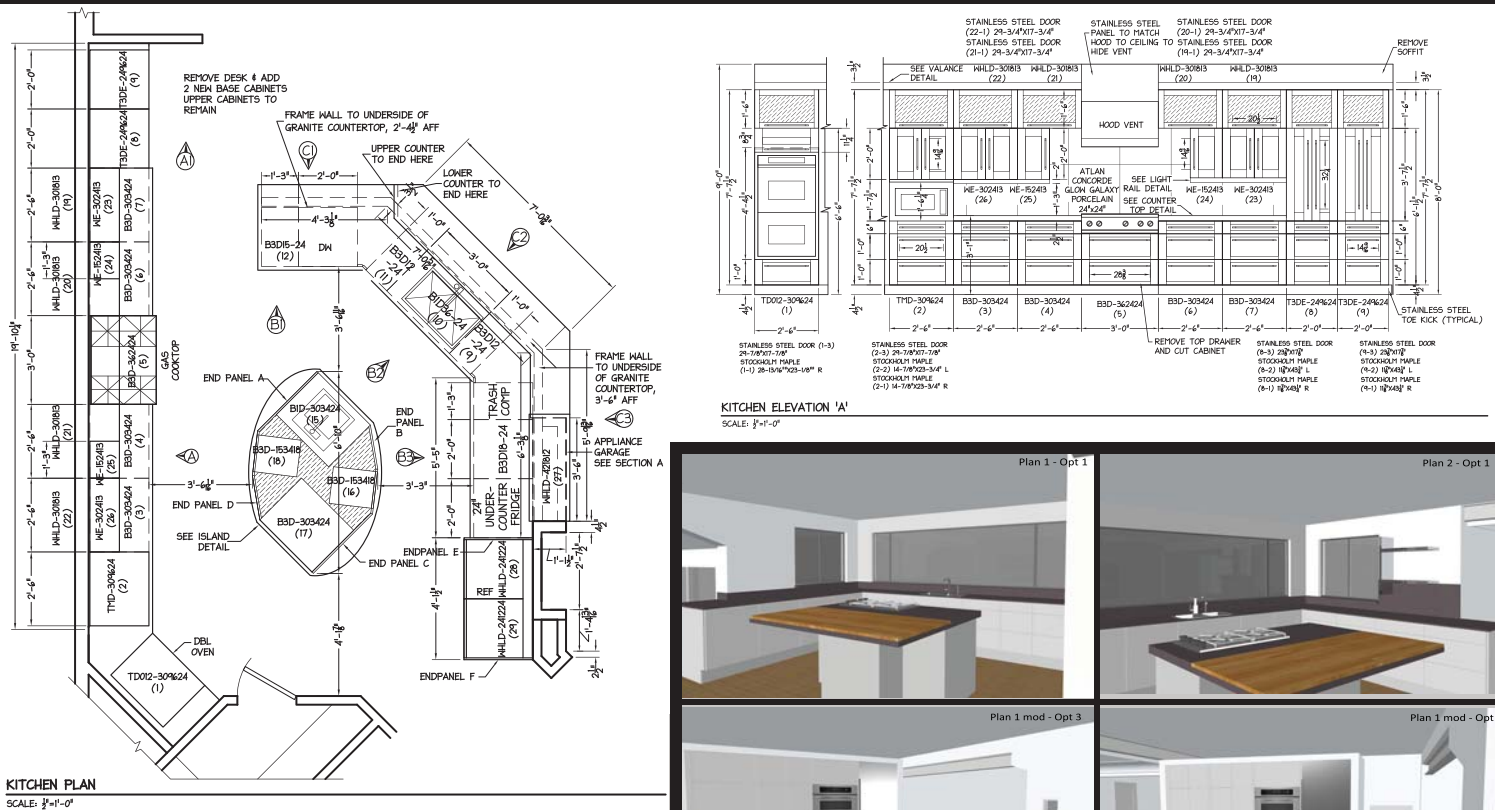


See [Project Portfolio](#) and [Design Portfolio](#)  
to see more drawings, models and pictures  
of our kitchen collection

The Kitchen is another signature feature of our homes. Since most people spend more on their kitchen than on their vehicle, it is very important to have a comprehensive understanding of everything necessary to insure the desired result. We will work with you every step of the way in the selection of cabinets and layout, countertops, appliances, plumbing (fixtures and layout), lighting design, (key for kitchen function and enhancing the materials), and work closely with you to develop all the fine details. Our proven program and experience will show you the way to the ultimate kitchen you've always dreamed of. Our knowledge of innovative kitchen design and layout, as well as the latest cutting edge materials are among the perks included with our services. Once the design is finalized, we create precision technical drawings that allow our fabricators and installers to easily understand the criteria, in order to get the client exactly what was intended and to guarantee near perfect accuracy. Like the rest of the project, the kitchen is developed using our CADD system that is optimized with 3D technology, and when infused with our design skills, we can create a masterful kitchen that works for you, and is fully understood. The use of our system and drawings will allow you to get a better sense of the space and design, which will help you make those very difficult decisions; a very important advantage when spending so much money!

We highly recommend to our clients the award winning cabinet line by “Fabritec”, located in Canada (with access to the finest wood), they offer everything from the more traditional to the most contemporary, cutting edge kitchen designs possible; European style at its best! We can customize the cabinets with any or all the options. You can learn more about this line at [cabinetry.visualimpax.com](http://cabinetry.visualimpax.com) (a link can be found on our home page on the bottom right). Although this line allows us to provide supreme quality at an exceptional cost, we will use any cabinet line and can even work with completely custom cabinets if requested. A complete cost comparison can be presented and analyzed so that you can choose the option that is best for you, ensuring the ultimate design for the best possible cost.

Below there are examples of the 3D model views used to develop a kitchen design, and the technical drawings used for ordering, fabrication, and installation. The following pages will show several of our completed kitchens. This will give you the opportunity to preview our kitchens prior to looking through our web portfolios. For an example of more drawings, you can go to the project portfolio section of our website, and if there is a button “drawing set available” you can view the full size precision drawings online. Also, there are drawings available in the slide shows of the portfolio sets.



Above is an example of a technical drawing of a floor plan and elevation for the **Italian Simplicity** on page 3.



Above is an example showing the 3D model's use in the development process.





**Euro-Modernistic**  
 See [Project Portfolio](#) Modernistic or  
[Design Portfolio](#) Kitchens - Euro-Modernistic for more pictures

This is a kitchen that most homeowners can only dream about. The cabinet doors and drawer fronts of espresso maple mixed with aluminum have striking stainless steel, self-closing drawers. The island creates three functional and independent spaces. It has a huge counter for eating and serving, and incorporates the cooking counter and prep sink. The exposed, blackened steel finish I beams and posts are a distinctive design element that also make the open floor plan possible. The exotic Brushed Platinum granite resembles a blend of concrete and granite, and fits seamlessly with the rest of the sophisticated environment of the dwelling.



**New York Loft**  
 See [Project Portfolio](#) New York Loft or  
[Design Portfolio](#) Kitchen - New York Loft  
 for more pictures



This loft kitchen has custom bamboo wood doors paired with the grain turned to 45 degrees, mixed with a pattern of custom welded stainless steel drawer fronts and doors, layered with glass. The stainless steel backsplash flows into the concrete countertops, which match the finish of the floor. The cabinets are topped off with a bulky wood bamboo valance, intertwined with blackened steel I beams, which continues the theme as a steel angle suspends the open shelf over the cook top.







### Italian Simplicity

See **Featured Project** Colorado Contemporary or **Design Portfolio** Kitchens - Italian Simplicity for more pictures

This masterful European-style kitchen adorned with espresso maple cabinets has custom stainless steel doors with screen glass, and stainless steel toe kicks. This perfect layout includes an elliptical shaped Island with a vegetable sink surrounded by a long counter for baking and cooking, a custom built-in appliance garage, and a full walk-in pantry. The Cosmos granite countertops have a powerful effect, as the coloring blends so well. The distinctive lighting features a Tech Lighting monorail system, with a combination of hanging glass pendants and directional open halogens that create a pattern of simplicity, as it repeats the elliptical shape of the island.



### Echo-European

See **Project Portfolio** New Tudor or **Design Portfolio** Kitchen - Echo-European for more pictures

The layout of the kitchen is divided into five sections. The sink is in the middle of 2 dishwashers with working space and an appliance garage on either side, ending with the fridge. The island contains a prep sink adjacent to a 36" cooktop and 15" grille, with a stainless steel island vent hanging above and a large eating area off to the side. The double oven sits next to the microwave with an adjacent counter space for laying out cookie sheets or pans. The can lights are recessed into the ceiling with a pattern of rectangles, and the bamboo valance at the top of the cabinets repeats the pattern of rectangles and lights from behind. The combination of South African wenge wood cabinets and bamboo wood details, along with the Wild Sea granite finishes the space to perfection.







### Octagonal Island

See [Project Portfolio Tudor or Design Portfolio Kitchens - Octagonal Island](#) for more pictures

Shapes are the theme, combining triangles, octagons, and curves to enliven this very elegant kitchen. The maple shaker style cabinet doors are mixed with v-grooved glass and a pattern of semi-circle stainless valances above, as the Lunada Bay glass tile backsplash below is seamless with no outlet, blending into the stainless steel cook top backsplash, separated by a wave glass liner. The octagon shaped island sides alternate from drawers to doors with glass, the center section rises to the occasion of serving, while the toe kick tapers to the mocha cherry wood floor. The octagon shape is repeated in the custom ceiling feature that provides both direct and indirect lighting. The coffered soffit above the upper cabinets ends with a band of maple wood that bevels at the transition to the ceiling, creating layers of shadows. The Volga Blue granite counter top finishes it off to perfection.



### Japanese Inspired

See [Project Portfolio California Tudor or Design Portfolio Kitchen - Japanese Inspired](#) for more pictures

Equipped with stainless steel appliances, the decor and detail is noticeable, from the custom moka triangular ceiling panel to the natural bamboo floor. Adjacent to the kitchen counter, the common "kitchen nook" has been replaced with a custom designed, welded steel frame, cherry top table with steel legs. All of which blends with the custom ceiling panels accented by brushed stainless steel recessed lighting. A Japanese-style tile backsplash seamlessly brings the environment together to make for an incredible kitchen.







## French Country

See [Project Portfolio](#) French Country or  
[Design Portfolio](#) Kitchens - French Country for more pictures

This open, state of the art, more traditional kitchen is designed with a large walk-in pantry, a wall of mullion windows, an elongated counter with an old fashion stone farmers sink, a trash compactor and dishwasher. Above there are cute, petite cabinets for storage, and a crown molding detail that wraps around the kitchen, flowing into a corner cook top imbedded into a stone archway, with a tumbled marble surround and a conveniently located pot filler faucet. The sizable center island has a concrete, travertine style counter top, with a prep sink and a curved section that projects for sitting, while the pots hanging above add that perfect conventional touch. The cherry cabinets with a mahogany colored finish are elegance at its finest, as are the fillers that resemble intricate newel posts.



## Mediterranean

See [Project Portfolio](#) Mediterranean or  
[Design Portfolio](#) Kitchen - Mediterranean for more pictures

The natural cherry, mission style cabinets with arched pewter pulls wrap around the angled walls. The windows have illuminated cabinets above with designer glass, topped by a continuous cherry mahogany beam valance. More beams contour the partial vaulted ceiling with three symmetrically placed skylights facing west, that provide an abundance of light. As the counter angles its way around the kitchen, it ends with a mini peninsula that contains a prep sink facing the Great Room; great for family gatherings. The curved center island, set on cherry mahogany legs connected by stainless steel tubes with storage for wine bottles, has the cook top with downdraft. The concrete counters blend nicely with the diamond pattern travertine backsplash.







### Deco Modern

See [Project Portfolio](#) Deco Tudor or  
[Design Portfolio](#) Kitchens - Deco Modern for more pictures

This modern version of a shaker style kitchen features mahogany colored cherry wood, mixed with European uplift doors that have sandblasted glass, aligned in a stepping pattern, and topped with a simple wood valance accented with an inlay of stainless steel. The round granite counter rotates 360 degrees in the center of this island, perfect for serving, with curved shapes to each side for eating. The eye-catching glass mosaic tile curves to the floor, bringing continuity to the backsplash throughout. The island also includes a gas cook top and a prep sink that face the spectacular Great Room fireplace detail. Opposite the main sink we have a bar set up for wine bottles and glasses, centrally located and great for entertaining.



### Neo-Tapered

See [Project Portfolio](#) Neo-Tudor or  
[Design Portfolio](#) Kitchen - Neo-Tapered for more pictures

The natural cherry wood, flat panel cabinets with a combination of glass are surrounded by the opposing tapered, custom valance and light rail, with an inlay of stainless. The bottom of the light rail layers the steel as it flows into this seamless stainless steel backsplash. Starting with the corner walk-in pantry, the double oven is in the center of the L-shaped counter as it opens to a peninsula with a prep sink and raised eating area, supported by a custom welded, stainless steel and glass frame. The island in the center connects all of the work stations having a cook top and large pan drawers for storage. The final touch is the Typhoon Green granite that makes this kitchen extraordinary.







## Simply Modern

See [Project Portfolio Poptop](#) or  
[Design Portfolio](#) Kitchens - Simply Modern for more pictures

This rectangular kitchen wastes no space with its European cabinets made custom with bamboo wood, alternating grain doors and drawer fronts mixed with a pattern of aluminum framed glass doors. The countertops are antique brown granite with the end chiseled to lend an industrial look. The seamless stainless steel backsplash matches the toe kick as the peninsula wraps around adding an eating counter and a built-in, butcher block cutting board great for prep. We also included amber colored pendants, mixed with open bulb directionals on a monorail lighting system, which swirls its way around with an abrupt end at the structural exposed I beam that is painted a glossy smooth red.



## Prevailing Revival

See [Project Portfolio Tudor Revival](#) or  
[Design Portfolio](#) Kitchen - Prevailing Revival for more pictures

This open kitchen is directly off the mud room, conveniently accessible from the garage and directly across from the Great Room. The natural cherry wood, uniquely styled cabinet delivers elegance with the simple stainless valance, and the custom welded stainless under cabinet light covers provide lots of counter light. The Absolute Black granite counter melds to the diamond pattern backsplash with stainless steel dots. This perfect layout centers a large triangular shaped island with a washing and prep sink, connecting the separate cooking and baking area, and is joined by a large walk in pantry.







## Modern Eclectic

See [Project Portfolio](#) French Tudor or [Design Portfolio](#) Kitchens - Modern Eclectic for more pictures

The natural cherry wood, shaker style cabinets, in combination with decorative glass, reflects brilliantly off the Brazilian cherry wood floor. The concrete counters finished with a blackened steel strip are seamless as the glass block glowing backlash, with alternating pattern of granite tile, and two skylights centers a planter window over the sink, adding natural light. The outer of the two islands includes a prep sink and eating area in an elongated curved counter top, which draws the line of separation. Above hangs a double peninsula cabinet that is great for displaying glasses. The inner, center island angles to create a perfect position for the cook top that is ideal for cooking.



## Illuminated Soffit

See [Project Portfolio](#) Illuminated Rail or [Design Portfolio](#) Kitchen - Illuminated Soffit for more pictures

The center Island contains a cook top facing this open floor plan directly across from the Great Room, close to the Dining Room, and has a patterned stainless steel counter that erects from the base through the granite countertop. The dark cherry wood cabinets are mixed with the illuminated soffit of sandblasted glass windows and a layered bamboo frame, sealed together by the stainless steel band valance, which adds continuity, as the illuminated glass rail bamboo staircase is featured straight in front. The monorail lighting system has a variety of pendants that mixes up this theme as it pierces a rectangular center skylight.

